

Spring 2010 Newsletter



PORTLAND HARBOUR
AUTHORITY

Breaking News...

...Aegean's Bunker Barge "Paxoi" arrives at its new home port of Portland.



Vessel Services Exceed 2009 Targets

Despite the global economic downturn budgets were more than met within the Vessel Services domain at Portland Port. The strongest area of growth was seen in the repair work afloat, with vessel owners and managers recognising Portland Port as a Premier Service Station - conveniently located only a short deviation from the busy Channel shipping lanes. Key strengths for the port are its unrestricted access, low tidal range and deep and clear waters.

Ship owners, operators and managers find the ports "One Stop Shop" option very attractive when they are looking for a quick, efficient and cost effective option.

Top 'OSS' services include:

- Hull Cleaning
- Propellor Polishing
- Pre-Dry Docking Surveys
- Underwater Class Surveys
- Stores/Crew Transfers
- Long or Short Lay Up

Great News for Vessel Owners!

Portland Port is delighted to advise its customers that it is freezing the 2009 tariff for Port and Harbour Dues and Berthing Fees. The port recognises that in the current shipping market the industry requires the highest level of support and hopes that by fixing its prices it demonstrates commitment to supporting its customers and driving the industry forward again.

Inside this issue:

Vessel Services Targets Smashed	1
Great news for vessel owners	1
Cruise News	1
Farewell to Jascon 27	2
Aegean Oil Welcomes New Barge to Portland	2
News from Global Marine	2
Wilderness Challenge	3
A New Tug for Portland	3
Go Ahead For Green	3
Ideal Hub for energy projects	3
Portland Port Welcomes it's First Lay-Up	4
New Recruit for Commercial Team	4

Cruise News

After another successful year for cruise calls in 2009 Portland Port is now gearing up for an even bigger year in 2010. The year will see more cruise ships, a number of them bigger than any cruise ships previously seen at the port, delivering more cruise passengers than ever before. For the first time in the Port's history the number of cruise calls will be in double figures whilst passenger numbers are expected to reach nearly 10,000.

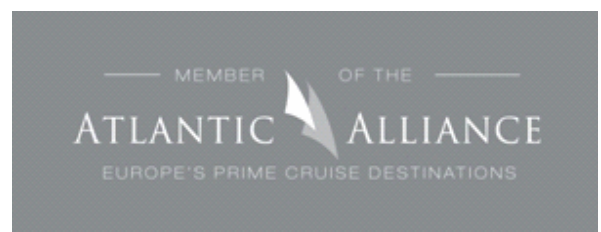
Portland Port's Commercial Manager, Ian McQuade, said, "2010 will be a very important year for Portland Port when it comes to the cruise market. We will be welcoming a number of cruise lines for the very first time; Crystal Cruises and Oceania Cruises from the USA, TUI Cruises and Phoenix Reisen from Germany, along with expanding UK operator Cruise and Maritime Voyages. We will also see the welcome return of previous visitors Holland America Lines, Saga, Peter Deilmann and Fred. Olsen."

Ian McQuade continued "One of the most exciting features of 2010 will be the arrival of the biggest cruise ship Portland Port has ever welcomed, the Holland America ship "Westerdam".

At 82,000 tonnes, 285m long and carrying over 1,900 passengers she is more than twice as big as anything the port has previously handled". Ian commented "The call of the Westerdam will make an impressive sight when she arrives in August".

"The work that has been done promoting Portland Port to the cruise lines over the last few years is now starting to bear fruit. We obviously hope that this year's visitors all go away with positive and happy memories of Portland and that we will see them returning in future years as a result" Ian added. This work will continue in March when Portland Port will be present at the Cruise Shipping Conference in Miami. The Port can be found on stand 505 as part of the Atlantic Alliance representation.

For more information visit:
www.atlanticalliance.eu



A Fond Farewell to the Jascon 27

After nearly 13 years the “Jascon 27” has departed Portland Port. The vessel is a flat bottomed barge with its superstructure consisting of steel containers stacked on top of one another providing five levels of accommodation.

In March 1997, the UK government established a new prison ship, “HMP Weare” as a temporary measure to ease prison overcrowding and a decision was made to base it at Portland Port. In March 2005 it was announced that the “Weare” was to close. The ship was then purchased by Sea Trucks and renamed as the “Jascon 27” and since has undergone an extensive refurbishment which secured its new long term off shore contract in West Africa.

The previously named “Weare” was used as a floating barracks during the Falklands war, and was subsequently purchased by the New York State Department of Correctional Services for use as a rehabilitation centre for those involved in drug crime.

The “Jascon 27” departed Portland for Onne in West Africa to be used as an offshore accommodation unit for the oil industry.

The team at Portland Port were saddened to see the vessel depart after so many years, as long established relationships had been made between the owners, crew and port.

The 3,000 mile voyage is set to take 21 days, pending no delays en route!



Jascon 27 departing Portland for West Africa

Aegean Marine Petroleum

Due to increased demand for bunkering operations at Portland Port, Aegean Marine Petroleum have enhanced their operational capabilities by introducing the Paxoi to their fleet.

Bunkering in Portland is conducted by modern double-hull supplying vessels, 24 hours a day, 7 days per week. The local service centre ‘Portland Bunkers International Ltd’ provides technical and logistics support to operators.



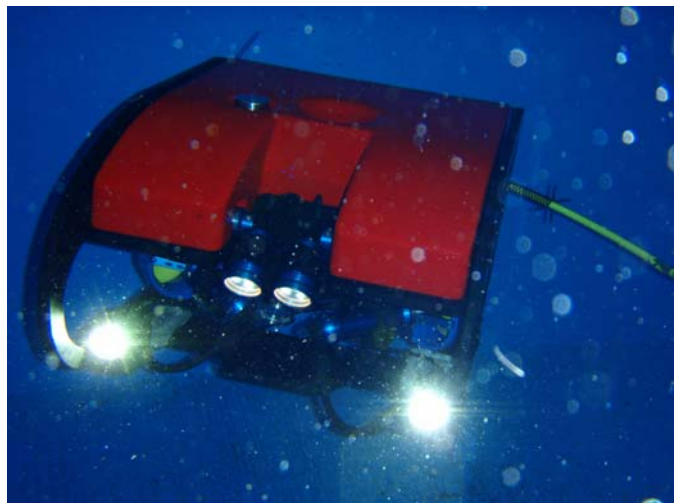
New Barge ‘Paxoi’

Aegean welcome your enquiries at their Portland office:

Portland Bunkers International Ltd – AMPNI
 Tel : +44 1305 824 620
 Fax : +44 1305 824 621
 Email : ukoperations@ampni.com

Launch of Predator ROV

Global Marine Systems, Subsea Services Group based at Portland Port will soon launch the next generation in ROV technology. Onsite training will be available for the state of the art Predator ROV at Portland Port and manufacture will soon be launched. The Predator ROV is ideal for inshore project services, such as hull and harbour inspections as well as certain marine related homeland security services.



Predator ROV

For more information visit:
www.subseaservicesgroup.com

Go Ahead For Green Energy Plant

W4B Renewable Energy Ltd has been granted planning permission to develop a green energy plant powered by vegetable and waste oils, based at Portland Port. When operational the plant will be able to generate 17.8 Megawatts of electricity which will be fed to the national grid, enough to power 9,000 homes. Up to 22 jobs will be created with the development of the 2 acre site - located on the edge of Balaclava Bay.

The Ideal Hub for Future Energy Projects

In a recent announcement the Crown Estate have given the go ahead for the development of a large off-shore wind farm off the Dorset coast. The West Isle of Wight zone, as it has been designated, covers an area of over 700 square kilometres and , when fully operational, will generate enough electricity to power nearly 600,000 homes.

Portland Port's location is within easy reach of the West Isle of Wight zone making it the perfect strategic location to support the development of the wind farm. With its deep

waters it is well able to accommodate the large ships needed to import the raw materials required. It then makes the ideal site for the assembly of the wind turbines and subsequent operational support of West Isle of Wight. To this end discussions have already begun with the developer and it is hoped that agreement can be reached for this exciting project.



Portland Port a perfect location for renewable energy projects

A New Tug for Portland Port

November 9th 2009 marked the next step in the continued development of Portland Port with the official naming ceremony for their new tug "Maiden Castle". At one stroke the new arrival more than doubles the towage capabilities of the Harbour, having a greater towing capacity than the Harbour's three existing tugs combined.



The 'Maiden Castle'

The arrival of the "Maiden Castle", along with an updated mooring plan, means that the port is now capable of handling ships in excess of 280m.

Steve Davies, Chief Executive of Portland Port commented "With the arrival of the Maiden Castle we can now look to handle even larger vessels within the harbour waters and

have the confidence that we can deal with any eventuality, whatever the weather."

Wilderness Challenge 2010

Following the success of the 2009 3 peaks Challenge, employees for Portland Port have this year decided to embark on a multi activity challenge based at Cairngorms National Park in Scotland.

The challenge will see teams competing against other top industry companies in a 50km bike ride, followed by a 3km canoe, finishing with a 10km walk or run up to the mountain peak.

Teams will be required to raise sponsorship in aid of the Sailors' Society. This is a charity that provides a personal lifeline for seafarers on board and when they stay ashore. Existing to enrich and enhance the well-being of seafarers in port through its Port Chaplains and Centres, seafarers are offered practical help and welfare, spiritual support, financial assistance and family liaison. Their Port Chaplains visit thousands of ships during the year and are often the first to notice when all is not well on board.

The challenge takes place on Sunday 26th September. If you would like to know further details or you are interested in sponsoring the event please contact the Commercial Department on: 01305 824044 or visit: www.sailors-society.org.

Portland Port Welcomes its First Lay-up!

Back in November Portland Port saw the arrival of its first lay-up vessel. Ship owners, operators and managers have to carefully assess the following criteria when considering locations for possible lay-ups.

- The suitability and safety of location
- Type of mooring
- Reactivation prior to return operations
- Manning requirements
- Preservation of machinery and hull
- Inspection and maintenance

Why Lay-Up?

Laying-up vessels makes financial sense to a ship owner, operator or manager, especially at times of low demand for ocean freight and depressed rates. During a regional or global recession, scrap prices drop and over a period of time, significant financial benefits can be gained by laying-up a vessel instead of scrapping it. Laying-up a ship is designed to preserve and maintain the vessel structure and machinery by protecting against corrosion and static seizure, at the same time as maintaining the security, safety and protection of the vessel, crew and environment.

Why choose Portland?

- Highly competitive rates
- Deep, sheltered and protected waters
- Close proximity to the English Channel shipping lanes
- 24/7 professional services



Portland Port's first lay-up

A lay-up period can provide a good opportunity to prepare a ship for higher performance, operational efficiency and increased competitiveness, after it enters service again.

There are various types of lay-up that Portland Port is able to offer its customers from warm through to long term.

For more information please contact our commercial team on: +44 (0)1305 824044 or email: sales@portland-port.co.uk

New Recruit for Commercial Team

November 2009 Portland Port welcomed the arrival of Amanda Milner who has joined the Commercial team as the new Sales and Marketing Executive. Amanda will be responsible for all aspects of vessel services for the port, with a key area of her role focused on establishing and developing new relationships with ship owners, operators and managers, whilst promoting the services and benefits of using Portland Port.

Amanda will also be responsible for the day to day marketing requirements of the port, including the company website and newsletter.

Following her degree Amanda has over 10 years of experience within the Tourism and Transport sector and therefore brings a wealth of experience to the Port.

Now back to her Portland roots Amanda is very much looking forward to being an ambassador for the company and is looking forward to being a key contact for customers whatever their vessel service needs!



Portland Harbour Authority Limited
Port Office
Castletown
Portland
Dorset
DT5 1PP

Phone: +44 (0)1305 824044
Fax: +44 (0)1305 824055
Email: a.milner@portland-port.co.uk
Web: www.portland-port.co.uk