



PORT & HARBOUR DUES (PORTLAND INNER HARBOUR)

The Portland Harbour Revision Order 1997 established Portland Port Ltd as the statutory Harbour Authority for Portland Harbour. It defined the limits of jurisdiction of Portland Port and conferred on them the power of control, operation, management and regulation in relation to the harbour and harbour premises.

The order provided for the development and for the safe and efficient operation of the commercial port; for the harbour conservancy and maintenance; for the conservation of the natural beauty of the harbour and its flora and fauna.



Port and Harbour dues are levied to fulfil some of this criteria; namely, to provide a safe harbour; to contribute towards the enormous cost of maintaining the extensive breakwaters without which a safe harbour would not exist; to ensure that all recreational users are aware of the regulations and adhere to them so that diverse activities can co-exist.



PORTLAND HARBOUR RADIO VHF Channel 74

Portland Harbourmaster
01305 824044

Weymouth Harbourmaster
01305 838423

Portland Coastguard
01305 760439

HM Customs - Poole
01202 685157

Portland Marina
08454 30 2012



PORTLAND HARBOUR
AUTHORITY

Castletown, Portland, Dorset, DT5 1PP
United Kingdom

Tel: +44 (0) 1305 824044
Fax: +44 (0) 1305 824055



PORTLAND HARBOUR AUTHORITY



Castletown
Portland
Dorset
DT5 1PP
United Kingdom

Visit our website at:
www.portland-port.co.uk

Tel: +44 (0) 1305 824044
Fax: +44 (0) 1305 824055






PORTLAND HARBOUR
AUTHORITY

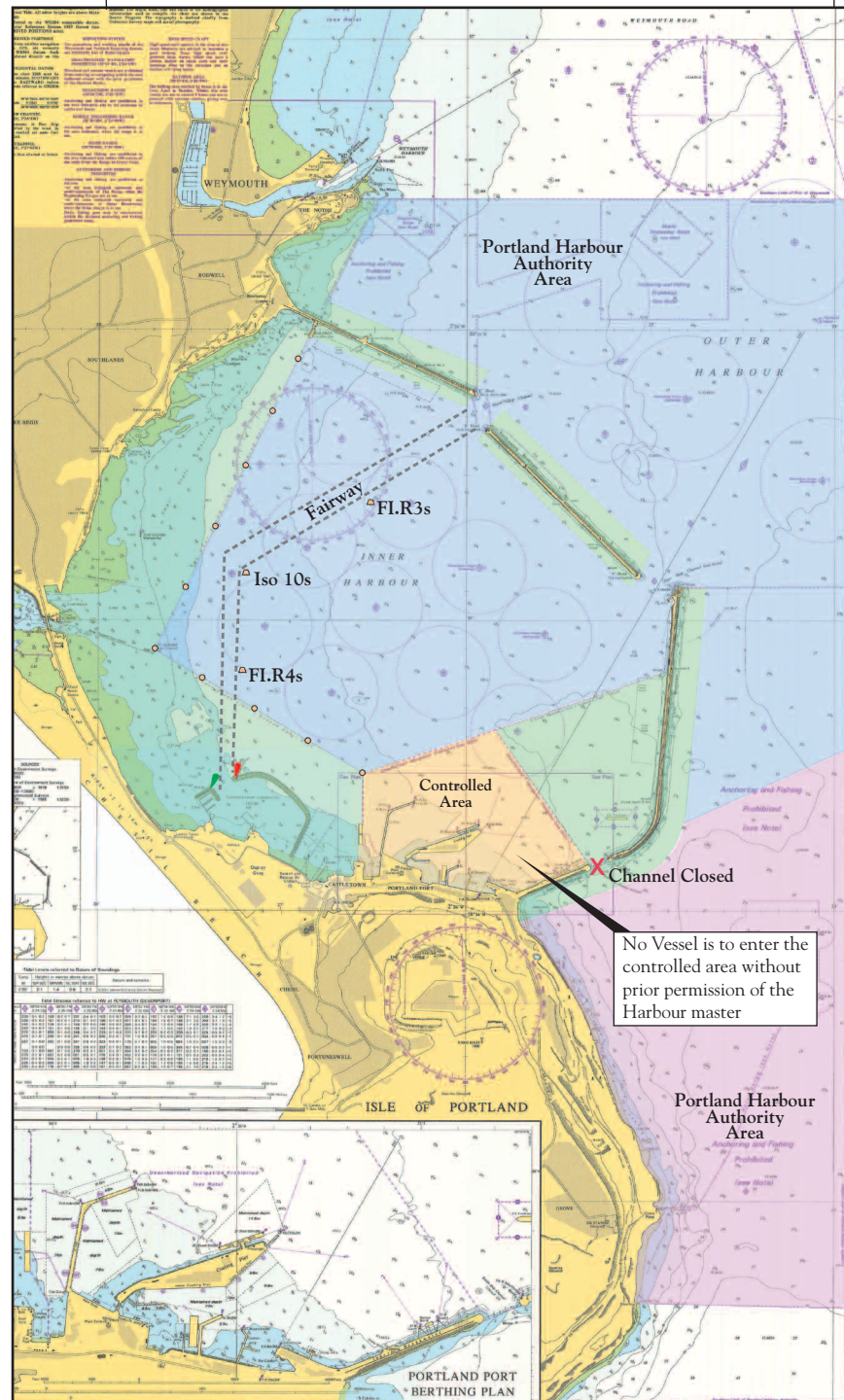
SAFETY INSTRUCTIONS

1. All non-commercial vessels should enter/exit the inner harbour via the north ship channel and follow the fairway.
2. South ship channel is closed to all vessels.
3. Commercial shipping has priority within the harbour limits.
4. PWC may launch at Ferrybridge and must keep to the designated channel/fairway until clear of the inner harbour.
5. No fishing by any method is to take place in the controlled area, main fairways or within 150 metres of the breakwater.
6. Water skiing/wakeboarding/towing toys require a permit from Portland Harbour Authority.
7. Kite surfing and similar activities require a permit from Portland Harbour Authority.
8. Access and egress from the marina may be restricted at certain times obey marina traffic signals.
9. All movements of vessels to and from the marina are to use the fairway.

All users of the harbour are to take direction from Harbour Authority vessels.

OBEY THE HARBOUR SPEED LIMITS.

-  No power driven vessel shall proceed greater than 6 knots in these areas.
-  No power driven vessel shall proceed greater than 6 knots in this area.
-  No power driven vessel shall proceed greater than 12 knots in these areas unless under 10 metres.



Not to be used for navigation

© Crown copyright and/or database rights. Reproduced from Admiralty chart 2268 by permission of the Controller of HMSO and the UK Hydrographic Office. (www.ukho.gov.uk)



PORTLAND HARBOUR
AUTHORITY

PORT TRAFFIC SIGNALS

All port users must obey traffic signals displayed. Signals are displayed to ensure clear navigational passage for all commercial vessels constrained by limits of draught and length.

Be observant, do not obstruct passage movement of vessels and follow instructions for your own safety.



All lights flashing Red
Entrance closed – await instructions from Portland Harbour Radio (VHF CH 74)



Fixed Red
Port Entrance closed commercial vessel departing



Fixed Green
Entrance closed commercial vessel arriving

MARINA TRAFFIC SIGNALS

All harbour users must obey traffic signals displayed. Signals are displayed to ensure clear navigational passage for all vessels.

Be observant do not obstruct passage movement of vessels and follow instructions for your own safety.



All lights flashing Red
All vessels await instructions. Entrance closed await instructions from Marina Control (VHF CH 80)



Fixed Red
Entrance closed – Sailing fleet departing



Fixed Green
Entrance closed – Sailing fleet arriving

NATURE & THE ENVIRONMENT

Users of the harbour are requested to help maintain water quality by ensuring that no wastes go into the water. Consider wildlife - please avoid disturbance if at all possible.